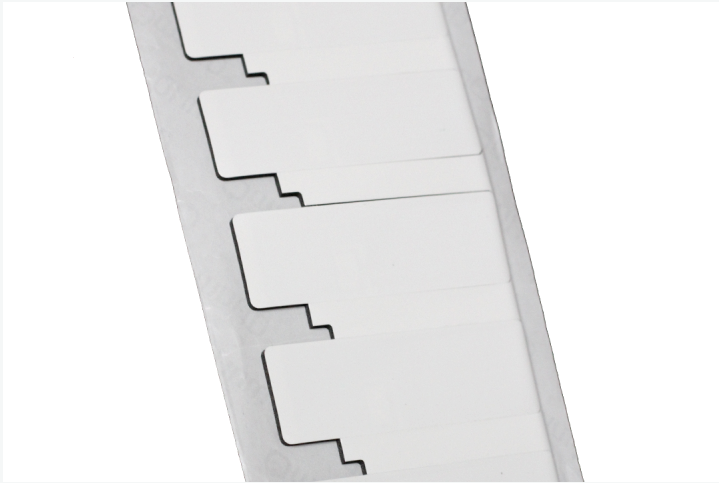


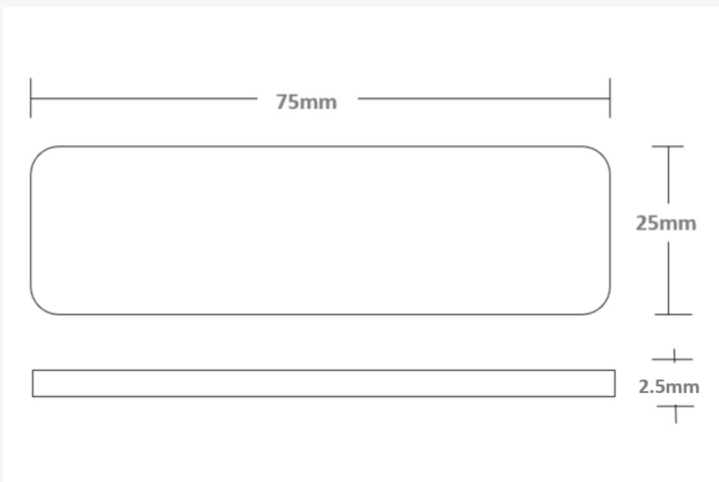
[Products] you can identify with



Physical Specifications

Material	White synthetic label and transparent over laminate
Size	75 x 25 x 2.50 mm 2.95 x 0.98 x 0.10 in
Weight (g)	1.66
Attachment	Film adhesive (std)

Dimensions



Measurements shown in mm

Flex 1200 GS

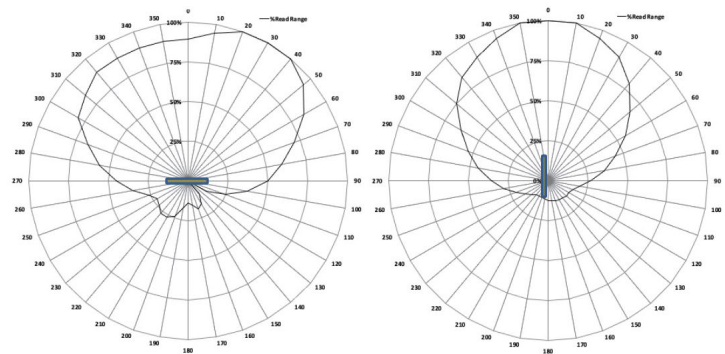
The Flex 1200 is a low profile, small form factor RFID tag designed specifically for attachment to office equipment, IT assets or RTI's. With its superior RF performance, this tag excels in portal applications where the read range can be expanded. In addition, the Flex 1200 tag is well suited to indoor applications where a low-cost option is needed.

RF Specification

Radio Protocol	EPC Class 1 Gen2v2
Frequency Range	866 - 928 (GS)
Read Range - Fixed Reader	Up to 13.2m (43.3 feet)
Read Range - Handheld Reader	Up to 5.8m (19 feet)
On Metal or Balanced	Optimized for metal
Material Compatibility	Metal
IC Type (Chip)	U-Code8
Memory	EPC - 128 bits User - 0 bits Unique TID - 48 bits

EPC and User memory are reprogrammable. UTID is locked at point of manufacture by IC manufacturer.

Radiation Patterns



[Products] you can identify with



With its flexibility and consistent RF performance, the Flex 1200 is ideally suited to applications such as:

- Office equipment
- Portals & Returnable Transit Items (RTI)
- Light outdoor use

Environmental Specifications

Operating Temperature	-40°C to +85°C
IP Rating	IP68

Certifications

CE, RoHS, US&Canada (C1D1/D2) certified (option)



Ordering Information

Warranty	1 year
Part Number / Order Codes / Order Numbers	CP13997
Supply Format	900 labels / roll

For product or technology inquiries email: sales@omni-id.com.
Visit omni-id.com to learn more about the complete line of **Omni-ID RFID** products