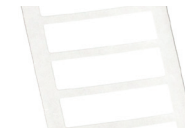
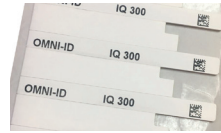


IQ Range – Labels



Featured Comparison Guide



Product Name		IQ 150	IQ 300	IQ 350	IQ 400P
Typical Applications		IT, office, hospital asset tracking Weapons, pipes, road signs Warehouse management	IT, office, hospital & laboratory asset tracking Logistics involving metallic packaging Intermodal logistics	IT and office asset tracking Logistics with metallic packaging Intermodal logistics	Plastic facias's on IT equipment Identification of IT & office hardware
RF Specifications	Frequency Range (MHz)	902-928 (US) 866-868 (EU)	866 – 868 MHz (EU) 902 – 928 MHz (US)	902-928 (US) 866-868 (EU)	860-960 (GS)
	Read Range (m) Fixed reader Handheld reader	Up to 1.8 Up to 1.0	Up to 3.9 Up to 2.0	Up to 3.8 Up to 2.0	Up to 8.0 Up to 4.3
	Material Compatibility	Optimized for all materials	Optimized for metal	Optimized for all materials	Plastic & non-metallic substrates
	IC Type	Impinj-M730	Impinj-M730	Impinj-M730	Impinj-M730
Physical and Environmental Specifications	Encasement / Material	Synthetic label	Premium Synthetic Label	Synthetic label	Premium Synthetic label
	Size (mm)	55.0 × 12.5 × 1.2	65.0 × 6.0 × 1.31	50.0 × 12.5 × 1.30	46.5 × 12.4 × 0.24
	Weight (g)	0.25	0.27	0.50	0.15
	Operating Temperature (°C) Max Temperature Exposure (°C)	-40 to +85 -40 to +85	-40 to +85 -40 to +85	-40 to +85 -40 to +85	-40 to +85 -40 to +85
	Ingress Protection	IP68	IP68	IP68	IP68
	Shock and Vibration		MIL STD 810-G	MIL STD 810-G	MIL STD 810-G
	Attachment	Self Adhesive (std)	Self Adhesive (std)	Self Adhesive (std)	Self Adhesive (std)
Order Codes*	Available with and without ground plane	EU - CP 14955 US - CP14953	CP15712-EU CP15711-US	CP15924 – GS	

* Order option codes are listed on the datasheets.

Visit www.omni-id.com to learn more about the complete line of Omni-ID RFID products.

Values for Comparison only, please refer to Product Datasheets for full specifications

Please note that we are undergoing some changes to the Integrated Circuits (IC's) we use in certain products in order to secure supply and also to upgrade to the very latest technology.

In most cases this is resulting in an increase in read performance (20% better on average). The best place for up to the minute product details is via the datasheets on our website at www.omni-id.com

©2021 Omni-ID. All rights reserved.

DS001206-16 | 042019

IQ Range – Labels



Featured Comparison Guide



High Temperature



High Temperature

Product Name		IQ 400P HT	IQ 600	IQ 600 GS	IQ 800P	IQ 800P HT
Typical Applications		Manufacturing Automotive paint processes Electronics	Logistics & packaging, Pipe manufacturing & recertification IT, Office, & Hospital tracking	Logistics involving metal produce or packaging. Pipe manufacturing and re-certification. IT, office & hospital assets tracking application.	Plastic RTI's and containers Plastic pallets	Manufacturing Automotive paint processes Electronics
RF Specifications	Frequency Range (MHz)	860–960 (GS)	902-928 (US) 866-868 (EU)	860 - 930 (GS)	860–960 (GS)	860–960 (GS)
	Read Range (m) Fixed reader Handheld reader	Up to 4.0 Up to 2.0	Up to 6.6 Up to 3.6	Up to 6.0 Up to 3.0	Up to 15.0 Up to 4.9	Up to 12.0 Up to 6.0
	Material Compatibility	Plastic & non-metallic substrates	Optimized for all materials	Optimized for metal, plastic & ceramic	Optimized for off metal	Plastic & on-metallic substrates
	IC Type	Alien Higgs 3	Impinj-M730	U-Code8	Impinj-M730	Impinj-M730
Physical and Environmental Specifications	Encasement / Material	Synthetic label	Synthetic label	Synthetic label	Synthetic label	High Temperature Synthetic label
	Size (mm)	50.0 × 30.0 × 0.49	100.0 × 24.0 × 1.3	96.0 × 24.0 × 1.30	95.0 × 21.0 × 0.24	85.0 × 55.0 × 0.49
	Weight (g)	0.51	2.0	0.50	0.50	1.50
	Operating Temperature (°C) Max Temperature Exposure (°C)	-40 to +85 -40 to +230	-40 to +85 -40 to +85	-40 to +85 -40 to +85	-40 to +85 -40 to +85	-40 to +85 -40 to +230
	Ingress Protection	IP68	IP68	IP68	IP68	IP68
	Shock and Vibration	MIL STD 810-G	MIL STD 810-G	MIL STD 810-G	MIL STD 810-G	MIL STD 810-G
	Attachment	Holes provided for mechanical attachment	Self Adhesive (std)	Self Adhesive (std)	Self Adhesive (std)	Holes provided for mechanical attachment
Order Codes†		166 – GS	Available with and without ground plane	133 – US, EU	CP15907 – GS	CP3445 – GS

† Order option codes are listed on the datasheets.

Visit www.omni-id.com to learn more about the complete line of Omni-ID RFID products.

Values for Comparison only, please refer to Product Datasheets for full specifications

Please note that we are undergoing some changes to the Integrated Circuits (ICs) we use in certain products in order to secure supply and also to upgrade to the very latest technology.

In most cases this is resulting in an increase in read performance (20% better on average). The best place for up to the minute product details is via the datasheets on our website at www.omni-id.com

©2021 Omni-ID. All rights reserved.

DS001206-16 | 042019